



USER MANUAL

SOONS SCISSOR ARM AWNING



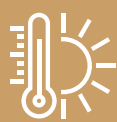


## SCISSOR ARM AWNING (MINI | XL | XXL)

Congratulations on your purchase of a Soons Scissor Arm Awning!

We recommend that you read this user manual carefully and thoroughly before use, so that you can continue to enjoy your screen for years to come:

### 1. SAFE USE



The tubular motor is thermally protected; in the event of overheating, the thermal protection kicks in and you cannot use the awning temporarily. After cooling down, the thermal protection switches off automatically.



Do not use the awning in strong winds ( $>6$  bft), hail or snow. Caution, gusting winds can damage the screen.



The awning can be stopped at any position using the controls. In reasonable wind or rain, fully retract or fully extend the awning. Partial extension can damage the fabric/awning.



Only operate the product when there are no persons/obstacles in the operating area. Always keep your eyes on the awning when switching it on or off.



Always call in a professional installer for repairs and/or work.



In case of ice or snow, always check that the profiles or the fabric are not frozen before operating the awning.



If your awning is equipped with infrared heaters, these must be switched off at least 15 minutes before you steer in the awning due to the risk of burning the fabric(s), flounce and other parts.

## 2. FABRIC PROPERTIES

Your scissor arm awning is equipped with the best quality fabrics from Dickson, Sattler or Sauledda. The fabrics are equipped with a waterproof coating and excellent UV resistance. Despite the best production, processing and confection techniques, some phenomena may occur in the fabrics. This cannot be avoided, but the value of the fabrics remains unchanged.

Examples of possible fabrics phenomena include:

### KINK CREASES



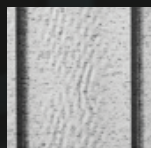
For light fabric colours, pigment shifts may occur in the kink during the confection of the fabrics. Kink creases look dark-coloured if you hold the fabrics up to the light.

### PINSTRIPES



When processing finished fabrics, even with the greatest care, light streaks may appear. These streaks are called pinstripes.

### WAVES



Near the hems and seams, due to the double layers of fabric, different change thicknesses may occur on the fabric roll. This can cause fabric tensions resulting in waves.

### RAIN RESISTANCE



The fabrics of your awning are waterproof impregnated and therefore also resistant to rain (with sufficient inclination). With new fabrics, however, there is a good chance they will leak at the seams (due to confection). However, the yarn will expand after a few rain showers, making the fabric waterproof.



## 3. WARRANTY

All goods and services supplied are subject to our terms and conditions, which can be sent to you free of charge upon request. You can also find the (B2B /B2C) terms and conditions on our website ([www.soons-zonwering.nl/voorwaarden](http://www.soons-zonwering.nl/voorwaarden)), or scan the following QR code:



SCAN ME

A warranty period of 2 years (RoMaZo conditions) applies to this product with the exclusions below:

- Use in weather conditions described under 1. (strong wind | snowfall | hail).
- Defective heater lamps / (LED) lights / panels are not covered by the warranty.
- Fabric wear due to intensive use (Your awning can be used in various weather conditions. Please note that use during rain / wind will significantly reduce the life of your awning).
- Damage to powder coating due to aggressive environment (salt influences coastal regions, heavy industry). Despite our heavy quality standards in powder coating steel/aluminium parts, powder coating damage may occur due to the above environmental factors.

Would you like more information? Please contact us.